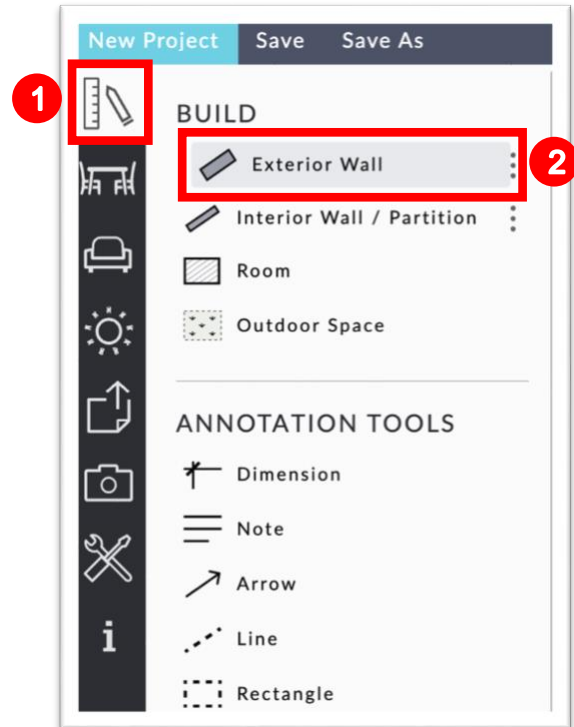


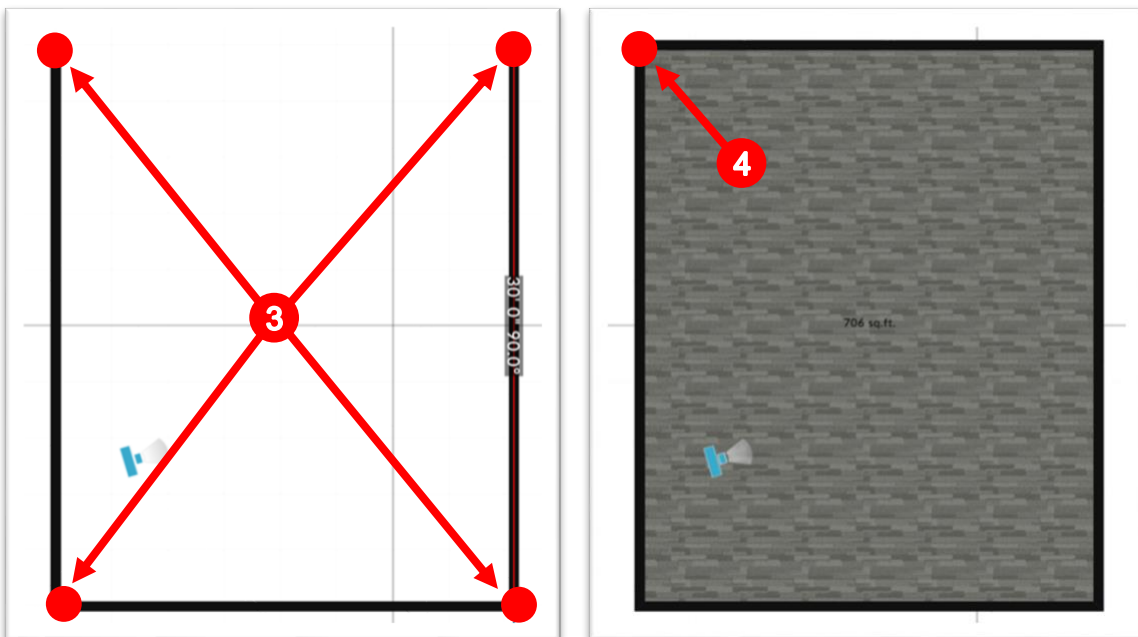
## Create a 3D Space with Only Dimensions

This Guide will show you how build a floor plan from scratch with only the dimensions of your space.

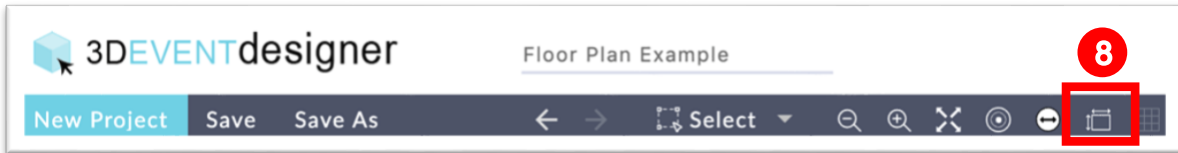
1. Click the “Build Icon” from the left menu bar.
2. Click “Exterior Wall”.



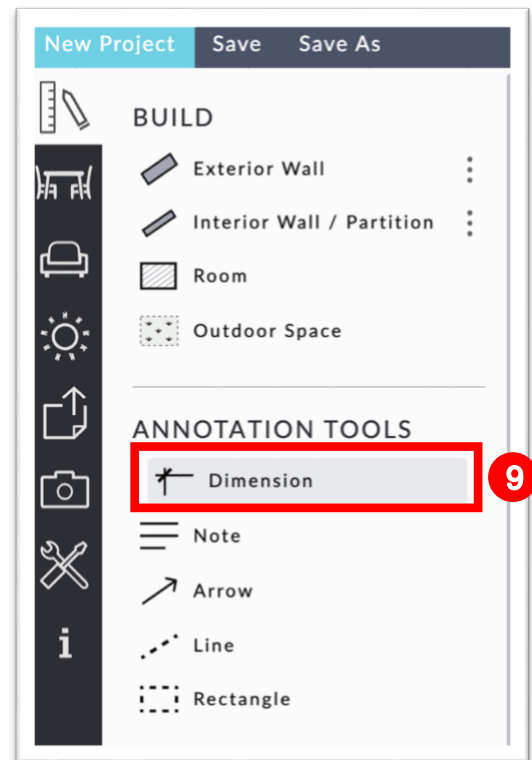
3. Click in one of the corners of the work area and begin drawing your walls, noting the dimension as you drag the cursor. (\*Tip: Draw a wall through any door, window or opening).
4. When you get back to your starting point, double click.



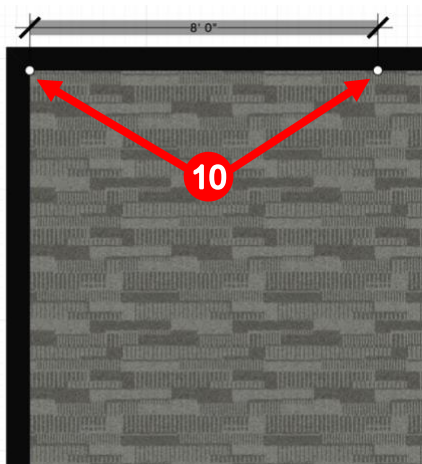
8. Click the “Dimensions Icon” in the Tool Bar to show the dimensions of all walls while creating new rooms.



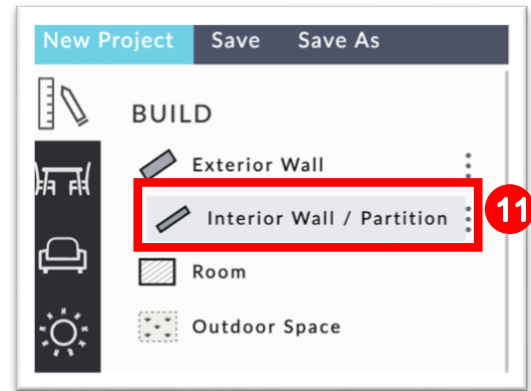
9. To be able to create interior rooms, you will need to measure out the starting point of the first wall. From the Build menu, click the dimension tool.



10. Click the starting point, drag, and click a second time to locate the starting point of the internal wall. (Dimensions can be adjusted by clicking on the new placed dimension and dragging the white circles).

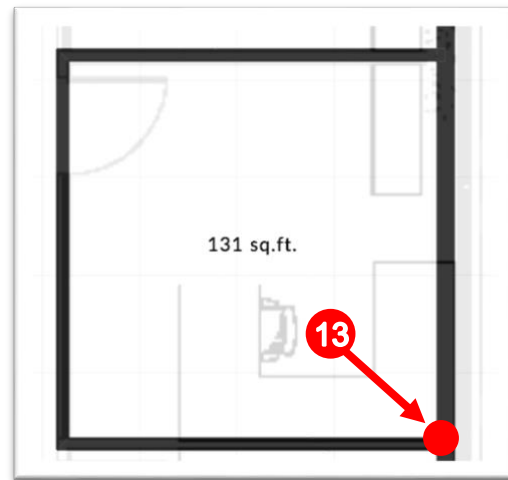
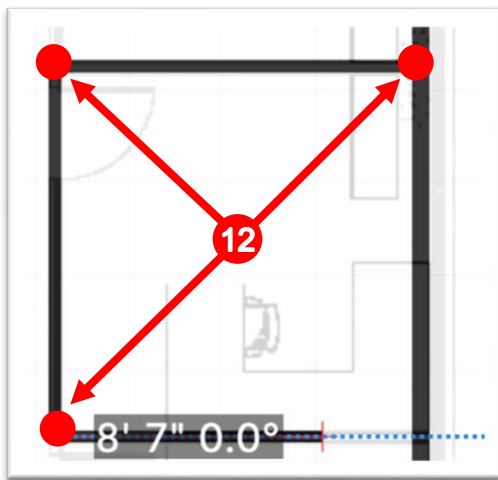


11. To create interior rooms, click the “Interior Wall / Partition” (located under the Build menu).

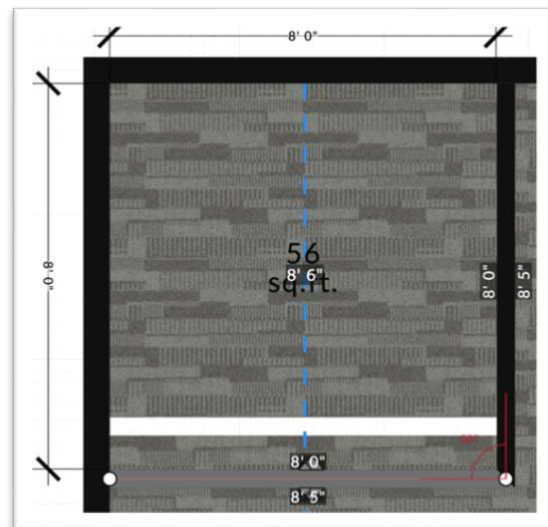


12. Click on each corner of the room you would like to create.

13. When you complete the room perimeter, double click.



Note: Dimensions during drawing are from the center of the wall, as the walls have thickness. Once you complete the wall, it will display the interior or exterior dimension accordingly. You can adjust all walls by either clicking on the wall and dragging the entire wall, or by clicking on the end of the wall and moving it.



You’ve now created your space in 3D. Please review the “Change Colors and Materials for Floors, Walls and Ceilings Guide” to make your floor plan more realistic (i.e., change the floor and wall colors, etc.). To add doors and windows to your space, review the “Add Room Constructions Item Guide”.