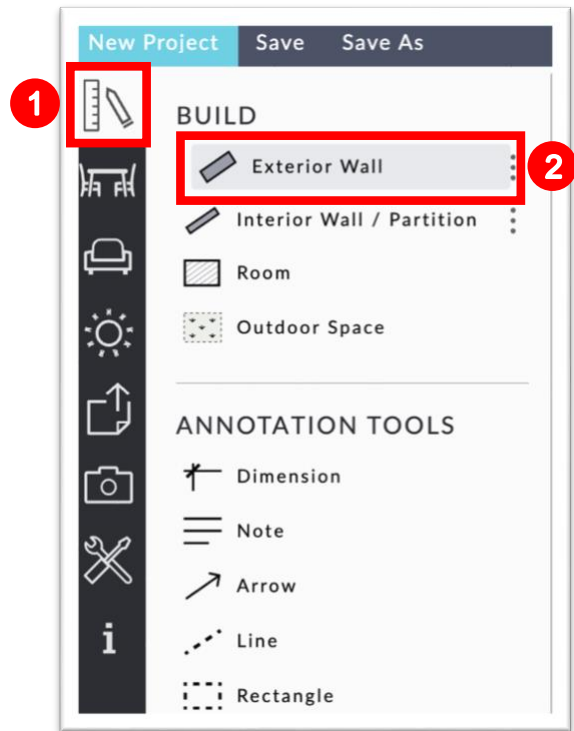


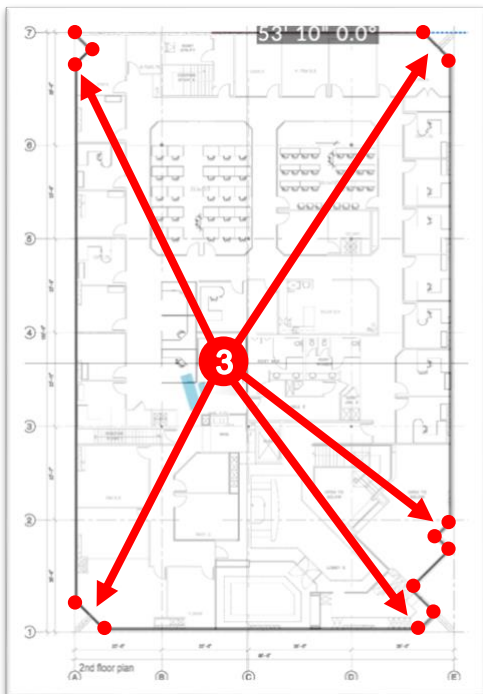
Convert Your Uploaded Floor Plan to a 3D Space

In this Guide you will learn how to convert your floor plan into 3D and how to create exterior and interior walls.

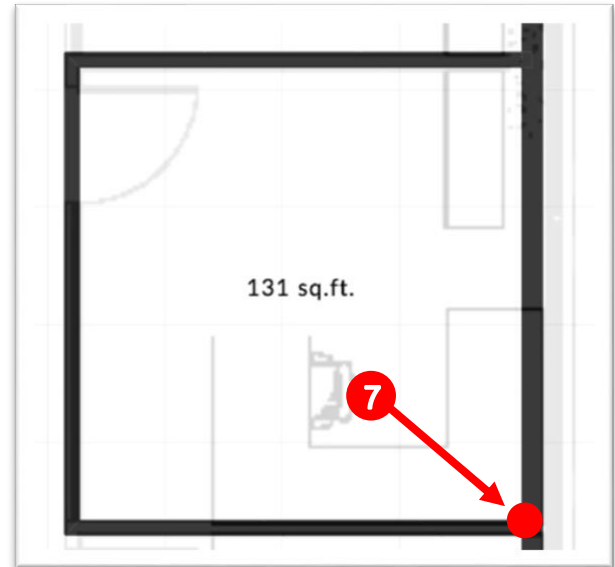
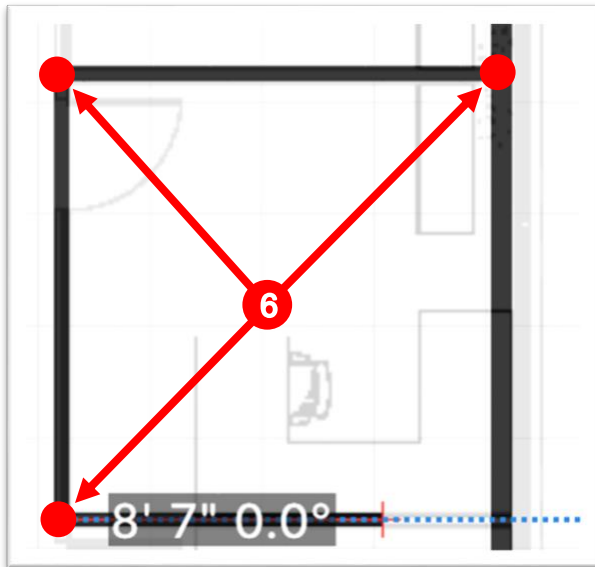
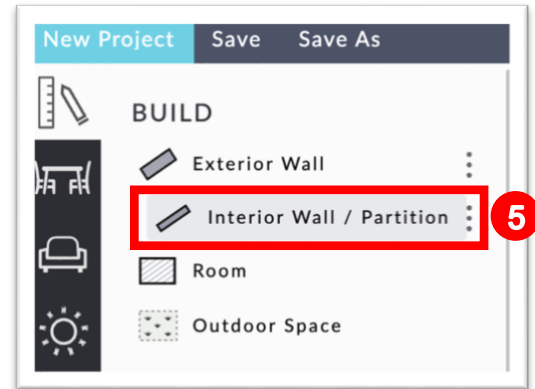
1. Click the “Build Icon” from the left menu bar.
2. Click “Exterior Wall”.



3. Click on each corner of your layout around the perimeter of your space. (*Tip: Draw a wall through any door, window or opening).
4. When you get back to your starting point, double click.



5. To create interior rooms, click the “Interior Wall/ Partition” (located under the Build menu).
6. Click on each corner of the room you would like to create.
7. When you complete the room perimeter, double click.



You've now created your space in 3D. Please review the “Change Colors and Materials for Floors, Windows and Ceilings Guide” to make your floor plan more realistic. To add doors and windows to your space, review the “Add Room Construction Items Guide”.

